

Milton moves on...



Outgoing Chief Executive Officer for the National Works Agency (NWA), Milton Hodelin receiving a painting from Manager, Training and Development at the NWA, Michelle Nesbeth. The painting was one of many gifts given to Mr. Hodelin at a recent farewell ceremony. Mr. Hodelin leaves the public service after 30 years. See related stories inside.

Inside this issue

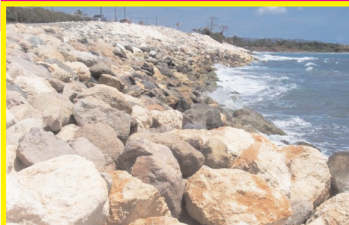
Milton ... after thirty years

pg 3



IDB Projects ...

pg 2-3



Patching ...
more than filling the gap ...

pg 6



Mrs. Vallrie Brown Whitter ... pg 9



CITATION

In Recognition of Distinguished Service and Leadership *Milton Owen Hodelin, Esq., BSc.*

OVERVIEW

As a man lives and moves about the earth he makes his mark on the sand of time. Some men occupy small spaces and never, for whatever reason, go beyond the confines of where they are rooted; and there are others whose lives have taken them many places yet little is remembered of them.

Then there are those who have the passion and the calling to go beyond the ordinary, to break the traditions of social complacency, to accept the inalienable responsibility to be different, and commit to a life of service to humanity. Some of these persons respond to their humanitarian instincts by answering the special call to serve through public service: that noble and unselfish profession! Through their work they touch many individuals, organizations and communities, often extending beyond programmes and structures, expanding ideas and impacting policies in a positive way.

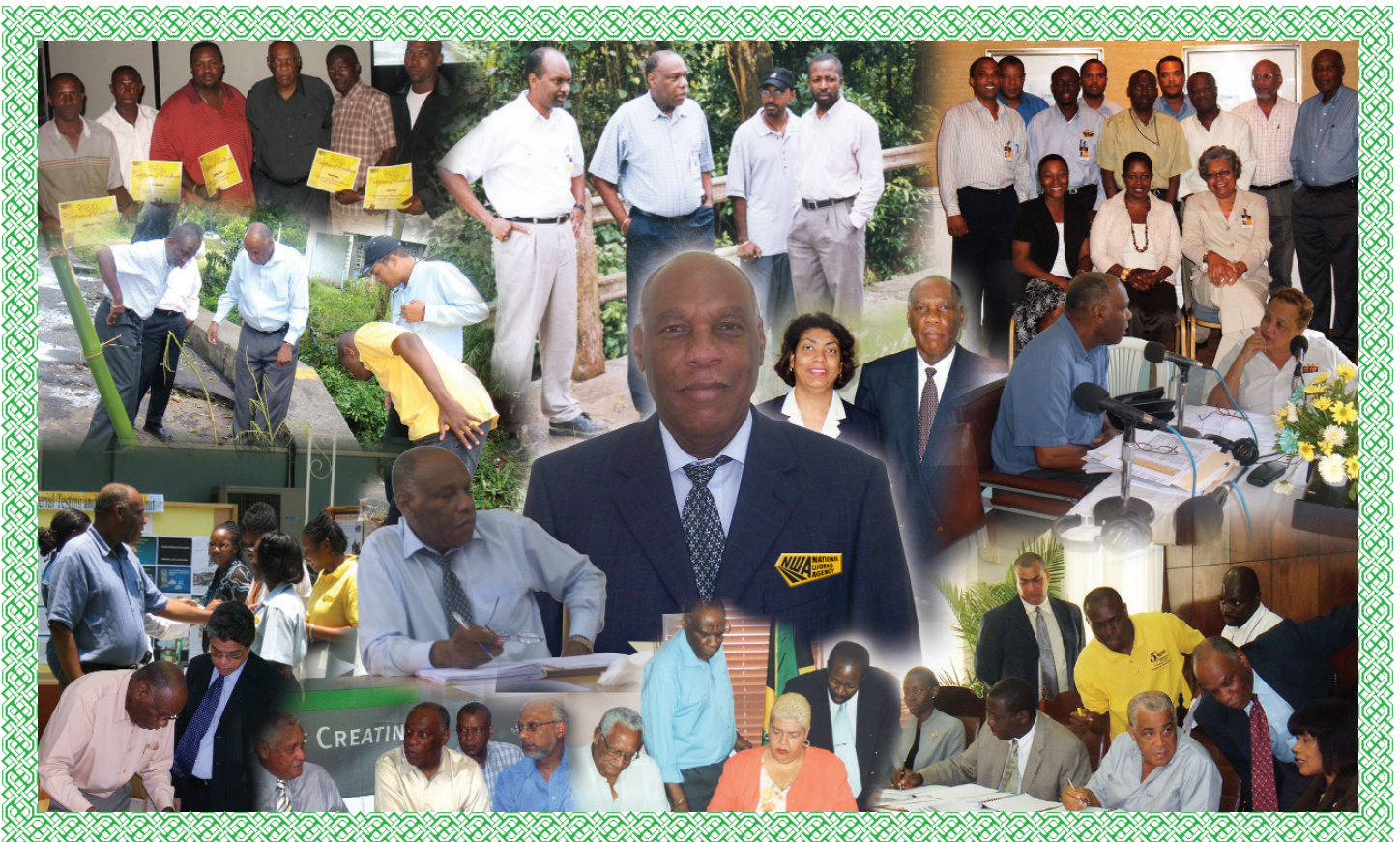
There is a minority of these individuals who become elevated to another level: that of top leadership and management. While top leadership is a prestigious, personal achievement with the trimmings of glitter and gold, it carries the price tag of absolute responsibility.

Often lonely, top leaders carry the burdens of the dreams, the needs and the aspirations of many. Such is the man who we recognize, celebrate and honor today with these words we now speak and which are etched on this tablet of paper. We honor him for his leadership, vision and service to the field of engineering; the development of infrastructure; and the management of public affairs, spanning over twenty nine years.

Today we salute our Honoree for commitment to country, for service to Central Government, as Modernization Trailblazer and as Chief Executive.

COMMITMENT TO COUNTRY

After completing secondary education in the 1970's our Honoree left the shores of Jamaica to equip himself for life in public service. He went to Canada where he first completed pre-university studies and later completed his Bachelors of Science Degree in Civil Engineering. Based on the records it is clear that our Honoree had the opportunity to pursue a career in Canada even if that meant "running off," yet unlike many other sons of the soil he made his way back home and has dedicated his life to his country and his people.



Milton Hodelin - CEO

bows out after over thirty years in the Public Service

There was an out pouring of tributes. Milton Hodelin seemed choked up. He even referred to Shaggy's hit single 'Big Man Don't Cry' He thanked team NWA for its support over the years, in particular the last three, when he was leader of the team. On Thursday, March 26, many sentiments were expressed at what has been dubbed "The Milton" (NWA's Restaurant) where a farewell function for outgoing CEO Milton Hodelin was held.

Flanked by several colleagues, Mr Hodelin listened attentively as many of them spoke of his early life, their associations and his many outstanding achievements. Many felt that there would be a great sense of loss as each speaker echoed Mr. Hodelin's penchant for sharing knowledge and his indefatigable energy in providing solutions, and meeting the challenges posed by the island's road network. He was hailed as a 'tower of strength' influencing upward mobility, moving staff through the ranks of the Ministry and into the 'NWA family.'

Among the persons who recognised his contributions were Minister of State in the Ministry of Transport and Works, Joseph Hibbert, Permanent Secretary in the Ministry of Transport and Works (MTW), Dr. Alwyn Hayles, NWA's Director of Asset Management, Wain Anderson, Accounts Manager, Sandra Grant, Policy Director at MTW, Janet Coleman-Hoilette, Director of Planning and Research, Patrick Rose and Principal Finance Officer at MTW, Altius Williams.

Minister Hibbert spoke of his long and distinguished career as a public servant, one which was decorated with selflessness and a love for country. Dr. Hayles spoke of Mr. Hodelin's many contributions to the development of the road network over the years, but highlighted as seminal contributions the introduction of the 'tidal flow system' between Portmore and Kingston prior to the establishment of Highway 2000; the Constant Spring Road, Eastwood Park Road, Balmoral Avenue one-way system, as well as the successful completion of Segment Two of the Northern Coastal Highway Improvement Project (NCHIP).

Mr. Anderson spoke of his many trips on Friday's to Segment Two of the NCHIP during which time the project was not only completed, but their friendship cemented.

Mrs. Sandra Grant zeroed in on the humane side of the man, many referred to as the 'Chief.' She vividly recalled his support and encouragement shown to her upon being transferred from the western end of the island to Kingston.

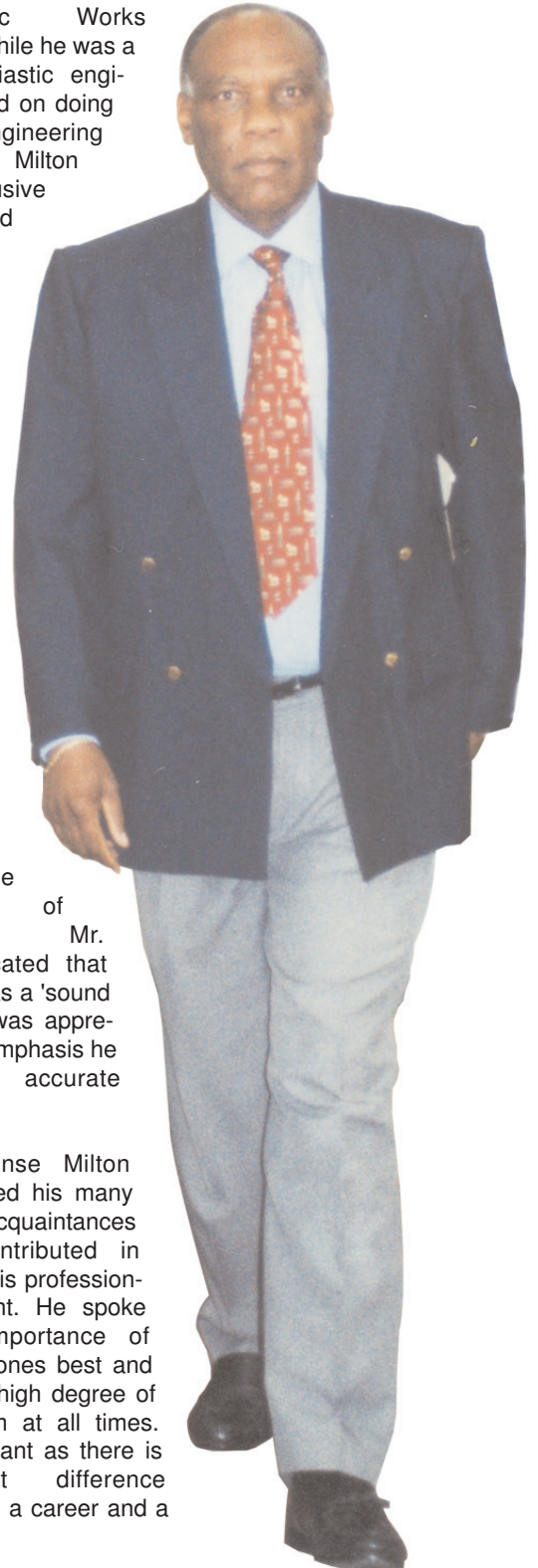
The sometimes sombre atmosphere was lightened when Janet Coleman-Hoilette declared that Mr. Hodelin may go, but the memory of his voice will always ring in her ears. She added that should she need a reminder of that soothing tone, she had no qualms in giving him a call.

Director of Planning and Research, Patrick Rose recalled the construction of a storm-water drain along Eastwood Park Road under

the Public Works Department, while he was a young enthusiastic engineer. "I insisted on doing things the engineering way. However, Milton in an unobtrusive way suggested that the design could be manipulated to make the project less costly and more sustainable. The drain still stands up to this date."

Altius Williams recalled his association with Mr. Hodelin going back over two decades in the Ministry of Construction. Mr. Williams indicated that Mr. Hodelin was a 'sound spender and was appreciative of the emphasis he placed on accurate accounting.'

In his response Milton Hodelin thanked his many friends and acquaintances who had contributed in some way to his professional development. He spoke about the importance of always doing ones best and maintaining a high degree of professionalism at all times. "This is important as there is an inherent difference between a job, a career and a calling."



IDB Projects

Making a big difference in North-eastern parishes

The North Eastern Region has, in recent times, seen a number of major projects being implemented, mainly as a part of the Inter American Development Bank (IDB) Hurricane and Flood Damage Relief Programme. The Programme which cost US\$7.7 million dollars saw six (6) areas in three (3) parishes being restored, the majority located in the parishes of Portland and St. Thomas.

ROSELLE, ST. THOMAS

The Roselle main road which is located along the coastline between the communities of Pamphret and Morant Bay in St. Thomas was recently rehabilitated at a cost of J\$78 million dollars. This section of roadway was damaged by Hurricane Dean in 2007 and required rehabilitative and protective works.

The project, which started in August 2008 and ended in March 2009, included sea defense works, in the form of rock revetment along 16,500 cubic metres of sea-side, the construction of random rubble retaining walls and the rehabilitation of a section of the roadway, which sported a massive breakaway. These works are intended to protect the roadway from damage caused by storm surges, hence maintaining the corridor for long-term use.



Rock Revetment Work at Roselle, St. Thomas

YALLAHS RIVER, ST. THOMAS

River Training and Bunding works have been completed along a section of the Yallahs River in St. Thomas at a cost of J\$37.2 million dollars. These works became necessary in order to protect the abutment of the newly constructed Yallahs Bridge, which was completed in August 2008. The works included desilting which saw 130,000 cubic metres of sand, silt and other debris being removed from the river and bunding along 1000 feet on either side of the channel. Another 1000 feet of embankment was also reformed.



Bunding Works near the Yallahs Bridge, St. Thomas

GEORGIA, ST. THOMAS

Two Bailey Bridges have been launched in the Community of Georgia. The community is located along the control section from Morant River Bridge to Trinityville. The works also include river training activities.

The bridges replace two Fords that were damaged as a result of massive flooding and erosion during the 2007 hurricane season. This resulted in the corridors being rendered impassable for several days. Works within the community began in October 2008 after being delayed, for two months, by high waters in the channels.

At a cost of J\$69.9 million dollars, the bridges spanning 130 feet and 100 feet were erected at Negro River and Georgia, respectively. River training has also been done, to complement and protect these structures, for 350 metres in respect of the Negro River and 100 metres at Georgia.



River Training at Georgia, St. Thomas.



Completed road surface at Manchioneal, Portland

MANCHIONEAL, PORTLAND

In Portland, the Muirton to Fair Prospect control section was recently restored. The works, which cost J\$86.3 million dollars, included rock revetment works along 3,500 cubic metres of shoreline, the construction of a rubble retaining wall, 22,000 metres of bushing in five communities, and the rehabilitation of 3,808 square metres of roadway, in the form of patching (Asphaltic Concrete).

The project, which began in August 2009, became necessary when Hurricane Dean in 2007 caused major damage to the shoreline in the vicinity of Manchioneal and undermined sections of the roadway in the process. Being a major thoroughfare, as it forms part of the roadway linking Port Antonio, Portland to Morant Bay, St. Thomas, a lot of the work on the roadway had to be done at night. As part of the project, work was undertaken in the communities of Manchioneal, Long Bay, Kensington, Rural Hill and Panton's Hope.

Rehabilitative Works at Grants Pen, St. Thomas

Restorative works are currently underway in the community of Grants Pen, St. Thomas. The works, which cost less than J\$10 million dollars, began in late January and is approximately eighty-five percent (85%) complete. The project is expected to be completed by the end of April, 2009.

As part of the project, the roadway has been heightened to mitigate the effects of flood waters that normally ponds along both sides of the thoroughfare. Three drains have also been constructed beneath the roadway, to facilitate the drainage of water from a spring in the area. A rubble retaining wall has also been constructed to protect the corridor. The corridor will be repaired with Asphaltic Concrete.



Drain construction at Grants Pen, St. Thomas.

PATCHING - *More Than Filling the Gap*



Workmen patching a section of the Fairfield main road in St. James

The geographic location of Jamaica makes it susceptible to weather phenomena such as flooding and hurricanes. Our 'aged' roads tend to have a low "immune" system to counteract the pounding and damaging impact caused by these phenomena and vehicular traffic.

The inability of our roads to resist these forces usually results in them ending up with a proliferation of potholes. Potholes are depressions created in a road surface in the form of a bowl like shape, usually 300mm (12") in diameter and minimum of 75mm (3") in depth, which tends to disrupt the smooth flow of traffic.

Weather phenomena including the most recent Tropical Storm Gustav in 2008; have left a number of main roads riddled with potholes. In a bid to "nurse" our aging roads back to "health," an extensive patching program was launched, to aid in the recovery process.

A US\$5-Million Patching program which is funded by a loan from Petro Caribe, administered through the Road Maintenance Fund (RMF), has seen an approximate total of 205,000m² of patching being executed islandwide.

The Benefits Derived

The patching program which began in December 2008 and scheduled to be completed in April 2009 has been well received by residents of many communities islandwide. The Agency has been commended for its efforts. The commendations tend to be in alignment with the objectives of the NWA, in promoting improved road safety, ride-ability and comfort to the road users, in line with its Mission.

Some of the benefits derived from this latest effort include;

- A significant reduction in the number of potholes;
- Reduction in road accidents caused by avoiding potholes;
- Reduction in the cost of vehicle maintenance, as less wear and tear, damage to wheels and front ends are being experienced;
- Reduction in the time spent on the roads (i.e. less stoppage to avoid potholes);
- Creation of employment for skilled and unskilled workers in various communities;
- Promoting increase activities in the movement of goods and services.

NWA ACQUIRES NEW FRONT-END LOADERS

The National Works Agency's (NWA) ability to respond to some emergency situations has been bolstered with the acquisition of four new Front-end Loaders. The four 2008 Komatsu W-380 midsize loaders were acquired under the Inter-American Development Bank's (IDB) Emergency Loan Programme and will also help to reduce the expenditure for hire of such vehicles.

The acquisition of these units is the first of its kind since the inception of the National Works Agency eight (8) years ago. They represent the first phase of a thrust to allow the NWA to rely on Force Account operation to fulfil its mandate.

According to the Director of Asset Management, Wain Anderson the existing fleet of NWA Front-end Loaders have proven to be quite unreliable and uneconomical to operate as they have all exceeded their useful economic life. Prior to the new acquisition the last purchase was made in 1996, almost thirteen years ago. The smaller size Front-end Loaders often renders them inadequate for certain types of operations undertaken by the Agency. In addition, the older units used



2008 Komatsu W-380 midsize loaders, acquired under the Inter-American Development Bank's (IDB) Emergency Loan Programme

by the NWA are open and can only be operated in fair weather conditions. The new units that have been acquired are

enclosed and air-conditioned, thus facilitating operations in adverse weather.



Teams members standing on parade at the kick off of the 2009 Ministry of Transport and Works/National Works Agency six – a – side invitational football competition on April 3. Ten teams will this year be vying for the coveted Dr. Alvin Hales Trophy, the NWA CEO Trophy and the Fair Play Award. The competition which will run for the next 15 weeks will see teams competing in both the League and Knockout competitions. The knockout finals are slated for Tuesday June, 23, while the League finals are scheduled for July 3. The teams participating in this years competitions are Finance and Planning, Technical Services, KMR (A), KMR (B), the Ministry of National Security, Ministry of Transport and Works, Special Olympics, Ministry of Water and Housing, Major Assets and Office of the Prime Minister – Local Government.

THE TECHNICAL SIDE

Technical Services Department — The Heart of the Works Agency

The Technical Services Department is responsible for providing consultancy services to the Ministry of Transport and Works and other governmental and statutory bodies. Its mission is to lead the dynamic modernization of technical services in the Agency while emphasizing the importance of proper environmental practices.

The Department is very vital to project developments of all types. Its role includes the following:

Stage 1: Site Investigations

Soil investigations – Civil Engineer

Topographic Survey – Land Surveyor

Stage 2: Design and Final Drawings

Concept, Calculations and detailing – Civil Engineer

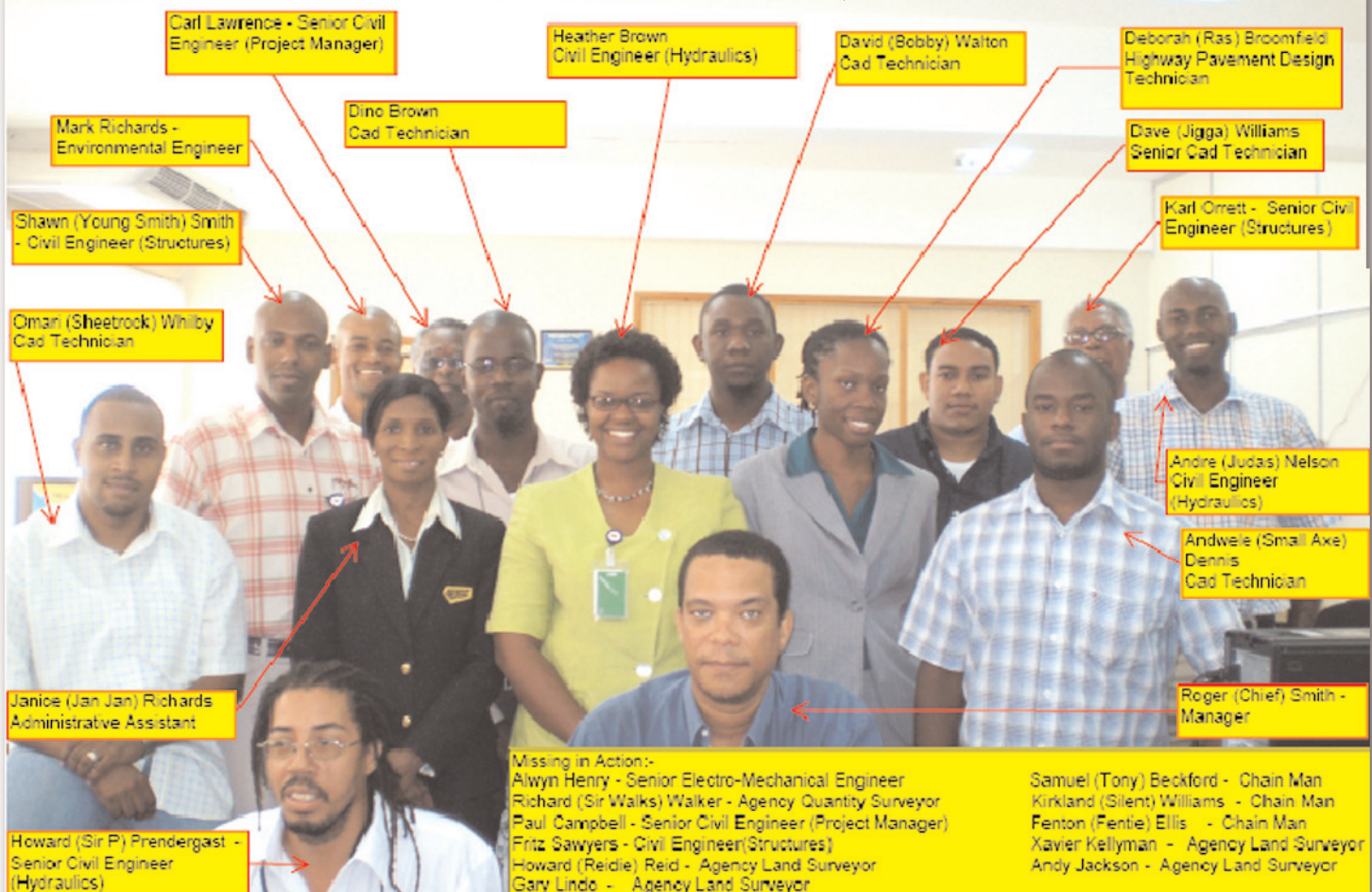
Drafting and presentation – CAD Technicians

Environmental impact and mitigation – Environmental Engineer

Stage 3: Costing and Tendering

Quantities, Costing and Procurement – Quantity Surveyor

Meet some members of the team.



Mrs Vallrie Brown-Whitter - *Maintenance Engineer Par excellence*

Martin Luther King in one of his many Speeches said that ***"all labour that uplifts humanity has dignity and importance and should be undertaken with painstaking excellence."*** Mrs. Valrie Brown Whitter, a member of the National Works Agency team of Maintenance Engineers has made this her Mantra.

The vivacious, amusing and lovable Vallerie Brown-Whitter is an Office Attendant par excellence. She has been assigned to the Office Management Unit of the Human Resource & Administration Department since 2003.

One can't help but notice her pleasant and sociable demeanor as she carries out her daily chores. Ms. Brown as she is called by almost everyone at the NWA's Corporate Office is known for her punctuality and very often is the first of her peers to arrive for work in the mornings. Many staff members look forward to Mrs. Brown-Whitter brightening their day with an effusive greeting, never failing to enquire about their well-being.

She approaches her tasks with gusto and treats her job with the respect that it deserves. Her performance is exceptional and consistent. Mrs. Brown-Whitter is a hard and smart worker, always willing to help, especially during emergencies. Emergency Operating Center (EOC) teams, for example, recall her efficiency at the Centre during the hurricane seasons over the years, along with her loyal companion, Maureen Hanson. She always ensured that refreshment were on time and adequate.

Vallerie is always pleasant, sociable, willing, polite and respectful. It is these qualities that have over the years endeared her to those



Mrs. Whitter and NWA's Office Manager, Iolyn Donald demonstrating their poetic skills while reciting a popular Louis Bennett Poem on Jamaica Day at the Head Office.



Mrs. Vallrie Brown-Whitter receiving the "Employee of the Quarter" award from Orlene Nemhard-Rowe, Director of Quality Assurance.

among whom she interacts daily. Her infectious smile adds to her poise and beauty. Her strong Christian values are reflected not just in the way she carries out her daily tasks, but also in her humility, courtesy and respect for others.

It is this conviction which stimulates her to work towards the success of the organization as well as her personal self fulfillment and satisfaction in achieving her own goals.

This stalwart of a woman is a Choir Director at her local church and an ardent prayer warrior; our 'in-house Minister' whenever a HRMA meeting is convened. A mother, grandmother, wife and a friend, are the caps she wears.

There is no doubt that Mrs. Valerie Brown-Whitter has in her own quiet but inimitable way made her mark on the staff and atmosphere at the National Works Agency.

NEW AND IMPROVED BRIDGE FOR SEVEN RIVERS ST. JAMES

Residents and motorists travelling between Montpellier and Cambridge in St. James now have the benefit of a new and improved two lane steel girder bridge equipped with sidewalks and Guard Rails.

Major Projects Manager at the National Works Agency (NWA) Andrew Sturridge says that the bridge was constructed at a cost of \$90 million dollars under the Agency's billion dollar R. A. Murray Priority Bridge Programme. It was constructed parallel to the Bailey Bridge which had served the area for several years.

This new structure has significantly improved the safety and ease with which persons travel between Montpellier and Cambridge in St. James. This can be accredited to the fact that the roadway has been widened and realigned. Additionally the safety features along the corridor have been improved. These include sidewalks, guardrails, road markings and the necessary road signs.

"The R. A. Murray Priority Bridge Programme is devoted to the replacement of nineteen bridges, in three phases island wide," explained Mr. Sturridge.

R. A. Murray International has been entrusted with the responsibility of providing management, material, procurement and assistance in bridge design. It is an international award winning firm with a proven track record for efficiently managing multifaceted projects.

Recently three other bridges have been completed under the programme. These are the Black River Bridge in Portland, the Johnson River Bridge in St. Thomas and the Milk River Bridge in Clarendon.

Several other bridges are now under construction. These include the Worthy Park Bridge in St. Catherine, the Queens River Bridge in Hanover and the Gordon Town Bridge in St. Andrew.



Completed Seven Rivers Bridge, St. James.

Uplifting Quotes for a Depressed Heart

*What is it about a short quotation that carries so much power?
Anyone who has ever been moved by "I have a dream" or
"I think, therefore I am" knows that a single, simple quote
can change a day, a life, a world.*

*For those who suffer from depression, words of uplift and inspiration
are always welcome. Explore these quotations and see if a few simple
words might change your day, your life, or your world.*

"Have patience with all things, but chiefly have patience with yourself. Do not lose courage in considering your own imperfections but instantly set about remedying them -- every day begin the task anew."
Saint Francis de Sales

"Sometimes your joy is the source of your smile, but sometimes your smile can be the source of your joy."
Thich Nhat Hanh

"Good humor is a tonic for mind and body. It is the best antidote for anxiety and depression. It is a business asset. It attracts and keeps friends. It lightens human burdens. It is the direct route to serenity and contentment."
Greenville Kleisser

"Character cannot be developed in ease and quiet. Only through experience of trial and suffering can the soul be strengthened, ambition inspired, and success achieved."
Helen Keller

"Pain insists upon being attended to. God whispers to us in our pleasures, speaks in our consciences, but shouts in our pains. It is his megaphone to rouse a deaf world."
C.S. Lewis

"What you thought before has led to every choice you have made, and this adds up to you at this moment. If you want to change who you are physically, mentally, and spiritually, you will have to change what you think."
Dr. Patrick Gentempo

"Nothing worth doing is completed in our lifetime, Therefore, we are saved by hope. Nothing true or beautiful or good makes complete sense in any immediate context of history; Therefore, we are saved by faith. Nothing we do, however virtuous, can be accomplished alone. Therefore, we are saved by love. No virtuous act is quite as virtuous from the standpoint of our friend or foe as from our own; Therefore, we are saved by the final form of love, which is forgiveness."
Reinhold Niebuhr

"Too often we underestimate the power of a touch, a smile, a kind word, a listening ear, an honest compliment, or the smallest act of caring, all of which have the potential to turn a life around."
Leo Buscaglia

CITATION

*In Recognition of Distinguished
Service and Leadership
Milton Owen Hodelin,
Esq., BSc.*



A review of the Honoree's career will show that from the time of his return to Jamaica, he has devoted himself to public service. Commencing at the Kingston and St. Andrew Corporation (KSAC), our Honoree started as an Engineer in 1978 and rose through the ranks to Deputy City Engineer by 1980. At the time of his departure from the Corporation which took him straight into Central Government, our Honoree was serving in a top engineering job, acting as Chief City Engineer. The scope of the job was wide and included Road Construction and Maintenance; Traffic Management; Rural Water Supply; Building; Town Planning and Development Control; and Vehicle Maintenance Workshops. This experience served our Honoree well and laid the foundation for higher service and leadership in Central Government.

SERVICE TO CENTRAL GOVERNMENT

Most of our Honoree's contribution has been through Central Government, in the Ministry with responsibility for Works through its various configurations as Ministry of Construction (Works), Ministry of Local Government and Works; the Ministry of Housing, Transport, Water and Works, and the Ministry of Transport and Works. Through his service to Central Government, the Honoree:-

- Planned, designed and implemented many projects and programmes;
- Directed works and implemented many solutions;
- Represented the Ministry and the Country, presenting reports, proposals and papers locally and regionally.

His sojourn in central government started at the Urban Maintenance Unit in 1985 -1994 as Chief Engineer, then as Director of Construction, between 1994 and 1999 and later Director of Maintenance from 1999 to 2000. Some notable recollections of the Honoree will be the recruitment of many new bright prospects to both the Construction and Maintenance Directorates, during his stewardship. Many will remember the Honoree for his personal encouragement and support for the development of staff through scholarship and study. Many will remember his determination that "We must find a way to do something."

Sometimes regarded as unorthodox, our Honoree certainly did not operate as a "Civil Servant," at least not in the stigmatized sense that this noble title has come to be known in our society. Our Honoree was ever willing to "step out of the box" in order to find solutions to problems. In this regard our Honoree must be credit-

ed along with the Traffic Engineering team of the day, for initiating new traffic flows in the Corporate Area, such as: the conversion of Constant Spring Road, Half Way Tree Road, Maxfield Avenue, Balmoral Avenue, Cargill Avenue and Eastwood Park Road, into a one way flow system. Another feat was the tidal flows which then alleviated the suffering of Portmore residents until the implementation of the Highway 2000 solution.

MODERNIZATION TRAILBLAZER

Not afraid of change or challenges, our Honoree embraced the modernization of the Works Division as the Government sought to review and rebrand the delivery of road services. The Honoree has influenced the design and organization of our regional administration and became "Mr. Implementation" himself, leading the team of parish and regional staff through various road projects, disaster response initiatives and hurricane damage restoration. Our Honoree has the merit of being the National Works Agency's first Technical Director to be selected by the former CEO, in 2000. There is therefore little wonder that our Honoree would have in time become the man to assume the reigns of leadership of the Agency.

THE CHIEF EXECUTIVE

Our Honoree has the distinction of appointments to several public boards and committees, contributing to the public management of several organizations. These include Kingston Water Front Development Company, Town and Country Planning Authority, Metropolitan Parks and Markets, Solid Waste Management Committee (Chair), Government Contracts Committee, Transport Authority, Rural Agricultural Development Authority and the Road Maintenance Fund.

We could say that with all the foregoing contributions and experiences, our Honoree was exposed and was indeed being prepared for the position which would crown his career: that of Chief Executive Officer of the National Works Agency, 2006 - 2009.

WE HONOR YOU

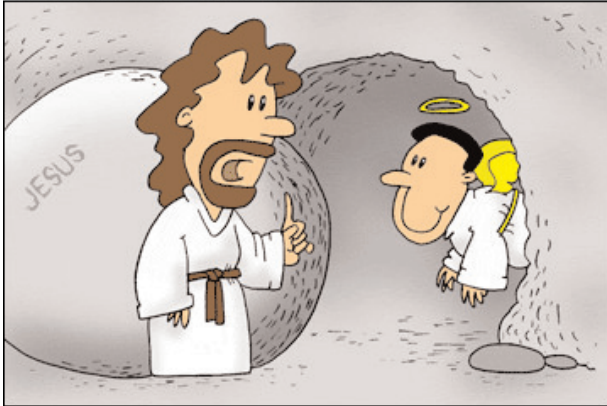
The Management and Staff of the National Works Agency honour you, Milton Owen Hodelin, for your dedicated service and leadership. We present you this Citation as testimony thereof, on this Twenty-sixth day in the month of March, Two Thousand and Nine, in the Year of our Lord.

JOKES

Ha HA Ha!



REVERENDFUN.COM COPYRIGHT G4, INC.



(See John 20:1-18)

03-29-2002

I WANT YOU TO FOLD UP MY BURIAL CLOTHES,
WAIT FOR MARY, AND REMEMBER THAT THIS IS
SERIOUS ... NO HIDING AND YELLING "BOO"



Have a Happy,
Holy Easter!

Easter Craft ideas for kids

SCRUNCHED TISSUE PAPER EGG

This Scrunched Tissue Paper Egg is fun for younger kids and makes a lovely, textural display for Easter.

YOU WILL NEED:

Card
Glue
Scraps of colored tissue paper



INSTRUCTIONS:

Cut an egg shape from the card.
Crumple the tissue paper scraps into balls.
Glue the tissue paper to the front of the egg.
Make your egg all one color, or add stripes or other patterns!

Of course you could punch a hole and hang your egg from a pretty ribbon.

BUNNY MASK

Use a paper plate and some craft cupboard bits and pieces to make a cute bunny mask - perfect for Easter!

YOU WILL NEED:

A paper plate
Pink paint
Pink card
White pipe cleaner (chenille stem)
Elastic thread
Glue
Black pen



INSTRUCTIONS:

Paint the back of the paper plate pink and leave to dry.

Cut out two eye holes. Snip the pipe cleaner into 3 and twist together in the centre. Glue to the centre of the face.

Cut out a nose from pink card and glue to the centre of the pipe cleaners.

Cut out two ears from the card and glue to the top of the head.
Draw on a mouth with black pen.

Make two small holes, one either side of the face.
Tie through the elastic thread.



Team NWA
let your voice be heard!

We welcome your
articles, poems,
inspirations, quotes, etc
send to: susanwebb@nwa.gov.im