

# ROADSTER



Volume 11, Issue 32  
March 2014

A Publication of the Communication  
and Customer Services Department

*"Paving the Way"*

## **JEEP Refuelled - Another \$630 Million pumped into infrastructural works**



Minister of Transport Works and Housing (MTWH), Dr. the Honourable Omar Davies (3rd right) witnessing one of the Works Contracts recently signed. This Contract forms the first phase of the Jamaica Emergency Employment Programme (JEEP), to be undertaken as part of the Major Infrastructural Development Programme (MIDP). Also in the picture (seated from right) are: Regional Director for China Harbour Engineering Company (CHEC), Zong Dong Tang; Member of Parliament, Central St. Catherine, Olivia "Babsy" Grange; Member of Parliament South East St. Ann, Honourable Lisa Hanna; Member of Parliament, East Central St. Catherine, Honourable Arnoldo Brown; Member of Parliament, North West St. James, Dr. Horace Chang; and Member of Parliament, South East Clarendon, Rudyard Spencer. At back (from left) are: Public Relations Officer, MTWH, Leo McEwan (partially hidden); State Minister for Works, Honourable Richard Azan; Minister without Portfolio in the MTWH, Honourable Dr. Morais Guy; Permanent Secretary, MTWH, Mrs. Audrey Sewell and Chief Executive Officer, NWA, E.G. Hunter.

*See related story on page 3*

Smoother Ride from  
Manchester to Trelawny  
... pg 7

NWA and TEF Rehabilitate the  
Free Hill Main Road in St. Ann  
... pg 11

Not so Rocky again in  
Rocky Point  
... pg 15



# On the roads with Minister Richard Azan



Minister Azan greets a resident of Western Portland.



Member of Parliament, Western Portland, Daryl Vaz (2nd left) points to erosion taking place along one of the roads in his constituency. Also in the picture are: (3rd right) Major Projects Manager, Edgar Llewelyn (partially hidden); Minister Azan; and Director of Regional Implementation & Special Projects, Varden Downer.



Minister Azan looking at a drain in the Montego Freezone area. The NWA through the Road Maintenance Fund, recently rehabilitated a section of the road in the area. Pointing to the drain, is Regional Manager, Western, Damion Townsend (3rd right); Managing Director of the RMF, Clement Watson (2nd right) and Varden Downer looked on (1st right).



Minister Azan looking at a display in the Montego Bay Civic Center. Minister of Tourism Hon. Dr. Wykeham McNeil (left) makes a point as Member of Parliament, Central St. James, Lloyd B. Smith looks on.



Mayor of St. Ann's Bay Desmond Gilmore, points to work being done in a section of St. Ann's Bay. Minister Azan (partially hidden). State Minister for Local Government, Colin Fagan and Member of Parliament for North East, St. Ann, Shahine Robinson (3rd right), were also present.



Assistant Parish Manager, Triston Tulloch, points to a section of the Mountain Slope Road which was recently repaved with the assistance of the Road Maintenance Fund (RMF). Looking on are Managing Director of RMF, Clement Watson (2nd left) and NWA's Regional Manager, South East, Denton Moore.



## JEEP Revs up for a 3rd Phase



Dr. Davies reviewing a list of projects to be undertaken through the JEEP. He is flanked by NWA's CEO, E.G. Hunter (left) and Director of Regional Implementation and Special Projects, Varden Downer (right).

The Government has launched the 3rd phase of its flagship job creating programme – the Jamaica Emergency Employment Programme (JEEP). This 3rd phase, valued at 630 million dollars, will see, among other things the rehabilitation of roads; drainage construction; installation of sidewalks; and corrective works to defective manholes. This new phase of the JEEP forms part of the US\$353 million Major Infrastructure Development Programme (MIDP), through which the government will be embarking on a massive road rehabilitation effort over the next three years.

Speaking at the launch of the programme, Minister of Transport, Works and Housing, Dr. the Honourable Omar Davies said the JEEP not only impacts the job creating thrust of the government, but also allows for Members of Parliament to respond to some of the chronic infrastructural needs in their constituencies. Dr. Davies said that the JEEP will also provide opportunities for small companies involved in construction, as the works are to be done by registered contractors who are at Grades Three and Four of the National Contracts Commission's list of registered contractors. A Grade Three firm cannot undertake work above a value of \$24 million, while Grade Four companies have a ceiling of \$12 million.

Dr. Davies said that the stipulation as to grades for the works became important as larger companies had been overshadowing smaller entities and that this could lead to the construction sector becoming uncompetitive. Smaller firms, he said, were likely to close because of a lack of business and that this would not be good for the country.

In the meantime, Chief Executive Officer of the National Works Agency, E.G. Hunter, who also spoke at the launch, attended by a number of Members of Parliament, said that the Agency had learnt valuable lessons from the implementation of other programmes and that new approaches would be undertaken in executing Phase Three of the JEEP. He said that one of the new strategies to be employed is that there will be a dedicated team of personnel for the implementation of the programme. He also said that the Agency will be holding all contractors to the quality standards stipulated in their contracts, and where there are deviations, actions will be taken.

Phases One and Two of the JEEP are said to have employed over 42,000 persons, on a myriad of projects, including those implemented by the NWA. The NWA through the JEEP has done work on roads, gullies, community centres and remand facilities.

*(See list of road prospects on page 18)*



## *Drainage improvement works for two St. Elizabeth corridors*

The corridors from Luana to Scott's Cove and Wanstead to New River, St. Elizabeth recently benefitted from significant drainage improvement works under the National Works Agency's (NWA) Road Maintenance Fund (RMF) financed 2013/14 programme.

Through the programme, a section of road located in the community of Font Hill, which is located along the Luana to Scott's Cove main road was improved. The improvement work included the replacement of defective culverts that had caused the section of road to be undermined.

The one point five (1.5) million dollar project had among the scope of works, bushing, cutting of trees, construction of an earth drain and the cleaning of V-drains. A concrete slab was also done to give suitable cover to the new culverts and Asphaltic Concrete used as the final surface.

In the meantime, work has also been completed on the stretch from Wanstead Road to New River in Santa Cruz. A section of this parochial road had been deteriorating due to a damaged culvert. The project which got underway in February 2014 at a cost of \$4-million was in the final stages of completion at the end of March. It is slated for completion in April 2014.

The scope of works includes the removal and replacing of defective culverts, laying of base material, construction of splash pad and hand rails, and repaving of the affected section.

Community Leader and Past President of the Jamaica Agricultural Society, Mr. Kingsley Clarke, was delighted about the quality of work done to date and expressed his gratitude to the NWA for the effort. Mr. Clarke said that the New River area had experienced immense flooding over the years and with the rehabilitation of the culvert, efforts at mitigation will be bolstered.



Construction work in progress



The section of the Font Hill main road after the completion of the works



Excavation to remove and install Culvert Pipes in New River



## *NWA Resumes Work on the Sandy Bay to Montpelier Road*

The Sandy Bay to Montpelier roadway, located in Eastern Hanover, serves the rural community of Montpelier and is located just off the Sandy Bay main road. The corridor through Sandy Bay forms part of Segment One of the North Coast Highway which extends from Reading in Montego Bay, St. James to the Negril roundabout in Westmoreland.

To get to Montpelier however, the similarity with the North Coast Highway ends at where the main road intersects the section of the highway which was named after former Member of Parliament and prominent Medical Doctor, Aston King. The commute along this roadway, for a first time visitor, is sure to be one filled with a few anxious moments. It is definitely not one to be taken lightly by the faint of heart. This is due to the narrow, winding nature of the roadway, coupled with the presence of a number of sheer drops along the corridor. The heavily pitted road surface certainly makes the journey along this corridor that much more difficult.

Realizing the need to improve the safety and ease with which road users traverse the corridor, the National Works Agency (NWA), in October 2012, commenced a multimillion road rehabilitation project. The project was expected to involve drainage improvement, the construction of retaining walls, and the resurfacing of the 3.7 km stretch of roadway using Double Surface Dressing. Unfortunately, the project was marred by several challenges and as a result came to a halt in 2013. At that point, only a few retaining walls had been constructed.

The NWA went back to the drawing board, revised the contract, formulated a new work plan and resumed work along the corridor on March 10, 2014. The project, which is valued at approximately \$54 million, is being supervised by the NWA, and is being executed by local contractor – Dwight's Construction. The contractor has committed to having the project completed by June 2014.

Currently the contract is now in its preliminary stages. Side drains are now being cleaned and sections of the corridor that had deteriorated badly being temporarily reinstated.

On a tour of the Montpelier community recently, residents expressed their appreciation for this project which they say has been long in coming. Member of Parliament DK Duncan and State Minister for Works, Richard Azan were both lauded for their efforts in having the project put back on course. The residents also gave a commitment to working with the NWA and contracting firm to ensure that quality works are delivered.



Minister Richard Azan (3rd right), being briefed on plans for the completion of the road, as explained by Major Project Manager, Horace Cotterel (2nd left). Others in the picture are Member of Parliament for Eastern Hanover, DK Duncan (1st left); Director of Regional Implementation and Special Projects, Varden Downer (3rd left); Managing Director of Dwight's Construction Limited, Benton Woodbine (2nd right) and Managing Director of the Road Maintenance Fund (RMF), Clement Watson (1st right).



## *NWA officers first in the Caribbean to be Certified by International body*

The National Works Agency's drive to have a world class staff complement continues. Staff members are routinely exposed both locally and overseas to the latest technologies and methodologies, to undertake work in order to fulfil the Agency's mandate that's captured in the mantra "developing safe, reliable and world class quality roads." This drive to have a world-class staff complement has borne another fruit. Through the NWA, Jamaica is now the only country in the Caribbean with an individual who has a Level Three certification in Traffic Signal Field Operations. In fact, Jamaica, through the NWA, is the first country in the region to obtain membership in the 160 year old International Municipal Signal Association (IMSA). The island is now recognized as a member of the South Eastern United States (Florida) Chapter of IMSA.

### **BACKGROUND**

The International Municipal Signal Association (IMSA) is the oldest known association of this kind worldwide. Its formation dates back to October 1896, when a group of municipal signal men from several east coast cities, met in Brooklyn, New York and organized an association called the "International Association of Fire and Police Telegraph Superintendents." The major objective of the organization was to keep its members and others in the profession, up-to-date on proper procedures of construction and maintenance of traffic signal systems, and information on new products, as well as the development of new equipment. The organization as it now, was formed in 1982.

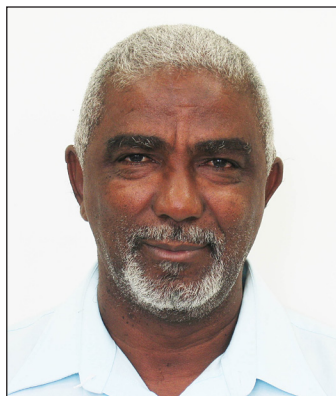
### **IMSA OFFERINGS**

The IMSA offers educational and certification programmes in Traffic Signals, Signs and Markings. This assists government agencies in improving safety on the roadways, thereby lowering the likelihood of unnecessary legal actions and increasing the competence of personnel who undertake these activities.

### **NWA AND THE IMSA**

Seventeen field officers from the NWA recently participated in a workshop with IMSA. The workshop was the prelude to Jamaica and the NWA becoming a member of this important certification body. The seminar was held over a three week period, between February 24 and March 11, 2014.

Lecturer for the three week seminar was Kenneth Baldwin,



Franklin Manhertz  
Supervisor, NWA's Traffic Unit



Judy-Kaye Grant  
Supervisor, Road Marking

Vice President of Florida International Municipal Signal Association. Mr. Baldwin's sessions centered on traffic signal operations, road markings, signage installation and maintenance practices. At the end of the seminar the officers gained certification in all areas, but at different levels. Of note was the impressive showing of Supervisor of NWA's, Traffic Unit, Franklyn Manhertz, who obtained the highest rating in signage installation. Manhertz is now the first and only officer in the Caribbean with a Level Three rating. The sole female member of the group Judy-Kaye Grant who supervises the Road Marking Crew, also created history by not only being the first female in the Caribbean to be certified, but also doing so in two areas. Her certifications are in Sign Installation and Road Marking, where she obtained levels one and two respectively.

### **THE BENEFITS TO JAMAICA**

With the training of this core group of officers, the NWA is now in a position to assist in the training of other persons, including private contractors in Work Zone Safety and the maintenance of systems for optimum safety on roads. The training has also bolstered the Agency's overall strategy, improving the uniformity of the installation of traffic signals, road markings and signage. This will improve safety for all road users.

Manhertz, whose team traverses the island erecting or repairing traffic signals, said he was elated at the training being done. "This is something that will be of tremendous benefits to the country, not just in the long term, but immediately...we are leading the Caribbean in this area of road operations and management and this is good," he said.



## *Smoother Ride from Manchester to Trelawny*



A rehabilitated section of the Highgate Hall to Dump main road

An eight million dollar partnership between the Road Maintenance Fund (RMF) and the NWA has resulted in a smoother ride for persons wishing to travel from Manchester to Trelawny, along the Dump to Highgate Hall main road. The corridor, sections of which have been in a serious state of disrepair for years, recently got some much needed attention. The project requires an additional \$10-million to complete the effort, but already that which has been completed is a welcomed change for motorists.

“We recognize that more work needs to be done, but budgetary challenges did not allow us to complete everything. It is our intention to do an additional \$10-million worth of work on this road during the 2014/15 fiscal year,” Regional Manager, Sadiq Mahabeer said. The two-kilometer stretch is heavily used by residents from communities such as Lorimers, Wait-A-Bit and Albert Town in South Trelawny and is considered as one of the important North-South links of the island.

Among the scope of the works are the removal of soft spots, which had made the corridor severely undulated, construction of sub surface drains and the cleaning of culverts. The base of the road is also being strengthened and Asphaltic Concrete used as the final surface.



## *The NWA Constructs Multi-Million Dollar Retaining Wall along the Blue Diamond Gully in Ironshore, St. James.*

A view of a section of the retaining wall which was built along the Blue Diamond Gully. Here, workmen are engaged in the process of pouring concrete into the formation.



Residents of Ironshore, St. James, who occupy premises near to the gully that runs behind the Blue Diamond Shopping Complex, can now breathe a sigh of relief. The National Works Agency (NWA) is now in the final stages of completing a multimillion dollar project aimed at stemming erosion of the gully embankment. For years the residents have had concerns about the gully's erosion which before the NWA's intervention was inching closer to their backyards.

In light of this, the NWA in February 2014 commenced the construction of a reinforced concrete retaining wall, along a critical section of the Gully. The project which is valued at approximately \$22 million was contracted to a local construction company, Chin's Construction, and is being supervised by the NWA.

To date the retaining wall has been substantially completed and efforts have now been focussed on backfilling the area behind the wall with free draining granular material. This will be done in layers and compacted, for maximum effect.

The Roadster spoke with Mavis Brown, a resident of the area, who expressed profound gratitude for the NWA's timely intervention in a situation which she believes could have had dangerous consequences, had the situation remained unchecked. Ms Brown, speaking on behalf of the residents of the Bayshore Apartments, a complex located along the Gully, said "we are so happy for this work by the NWA; so far the project looks good and we are happy that our homes are now safe. Whenever it rained heavily we were always so anxious about what would happen to our homes, but now we feel safe with what the NWA has done."



## *Jamaica's South Coast Receives further boost to its Road Infrastructure*

The South Coast of Jamaica is an area which is viewed by many as one possessing much untapped potential. It is viewed in many quarters as being on the cusp of major development due to its unique eco-tourism offerings and recent investments, especially in infrastructure.

It is generally accepted that a good road network drives development. In this vein, the Government of Jamaica is investing even further in the road infrastructure in the area, through a \$300 million dollar project to rehabilitate the corridor between Belmont and Scott's Cove and the construction of a new bridge in Cave, Westmoreland. These project follow closely on the heels of a \$497 million project which saw the complete rehabilitation of the roadway between Ferris Cross and Belmont.



Workmen preparing the deck of the Cave Bridge for the pouring of concrete

This latest effort by the NWA forms part of a multifaceted approach to the rehabilitation of the entire length of the 22.1 km stretch of roadway between Ferris Cross and Scott's Cove. The corridor is a critical route used by residents of communities such as Ferris, Waterwheel, Belmont, Whitehouse and surrounding areas. Additionally it is a critical link to the Corporate Area and the North Coast.

### **REHABILITATION OF THE BELMONT TO SCOTT'S COVE PROJECT NOW UNDERWAY**

In March 2014, the NWA resumed work on the Belmont to Scott's Cove roadway. This project started in 2012; however it was put on hold to facilitate the much needed replacement of defective National Water Commission (NWC) pipelines along a 15 km stretch of the roadway.

The road project is valued at approximately \$279 million dollars and involves significant drainage improvement and reconstruction of the roadway. The project is now in its preliminary stages, with the contractor completing the bushing of verges and the trimming of overhanging tree limbs.

### **NEW BRIDGE FOR CAVE, WESTMORELAND**

The narrow, single lane bridge, located along the Cave roadway, is now being replaced by the NWA at a cost of approximately \$22 million. The single-lane Cave Bridge (locally referred to as the Waterwheel Bridge), has now been demolished to make way for the construction of a new two lane structure. The project also involves the realignment of the roadway in the vicinity of the bridge, to ensure optimal safety of road users who traverse the area.

Councillor of the Whitehouse Division in Eastern Westmoreland, Valdense Gifford, speaking at a recent meeting of the Westmoreland Infrastructure Development and Maintenance Committee, commended the NWA for what he says is an impressive structure. "I must say I am very pleased with the Cave project. I think even with the realigning of the roadway, this is going to be marked improvement to what we had before," Mr Gifford said.



## *NWA Replaces Manhole Covers and Gratings across St. Catherine*

A combination of theft and what amounts to malicious destruction, have resulted in dangerous holes being present where Manhole Covers used to be located. This practice considered by many to be simple vandalism, has become quite common in St. Catherine and cost the NWA a great deal of money to replace.

The theft and destruction of these covers and gratings in the Kingston Metropolitan Region is now of major concern to the authorities. These missing covers have caused injury to several persons, where unsuspecting pedestrians, especially the elderly have stumbled into the holes where the covers have been missing.

### **NWA'S RESPONSE**

In mid-January 2014, the National Works Agency began undertaking repairs to damaged gratings and replacing missing manhole covers at seven locations across St. Catherine. Replacement and repairs were done in Spanish Town along Burke Road and Wellington Street, in Linstead in the vicinity of the Jamaica Urban Transportation Company (JUTC), as well as in Old Harbour, Ewarton, Naggo Head, Cumberland and Hellshire.

The works that were carried out included demolition of share wall, removal of damaged grating, construction of temporary roadway, drain cleaning, reinforced concrete repair, and fabrication, including installation of gratings and manhole covers. These projects were completed in sixty days, by the end of February 2014, and cost just over \$7 million.

### *Meet the NWA's Board*



Seated at front: Ms Rochelle Dacres, Ms Yvonne McCormack, Mrs Annette Hinds (Board Secretary).

Standing at back: Mr. Alston Esmie, Mr E. G. Hunter (CEO – NWA), Dr Parris Lyew-Ayee (Board Chairman), Mr O. D. Ramtallie, Mr Ian Kerr





Sheet patching underway along the Free Hill main road in St. Ann

## *NWA and TEF Rehabilitate the Free Hill Main Road in St. Ann*

The Free Hill Community, located along the Priory to Bamboo main road, is nestled in the mountains of northwestern St. Ann and has remained undisturbed for some years. So much so that many Jamaicans are not aware of the beauty to be seen from its mountainous climes, or of the adventures to be experienced at the tourist attraction that lies nestled within its confines.

The sole access to many homes and farms, the roadway was plagued by severe scouring, in sections, and a breakaway that threatened the stability of the community. After some prodding from residents and stakeholders, a deliberate and concerted effort was made by the National Works Agency (NWA), in collaboration with the Tourism Enhancement Fund (TEF), to restore the roadway in the Community to a reasonable condition.

As part of the rehabilitative project, 2,150 square metres of roadway was patched with Asphaltic Concrete; 600 metres of the roadway was cleared of bush; and 15 cubic metres of random rubble wall was constructed, complete with parapet. The area in the vicinity of the retaining wall was also backfilled and restored. The project was executed at a cost of just over 5.4 million dollars and is now substantially completed.

Residents have expressed gratitude for the works that have been done in their community and have commented that the roadway is much easier to traverse now that the pavement has been repaired.



Random Rubble Retaining Wall along the Free Hill roadway during and after construction



## Michael Saunderson: *The Driver behind NWA's Intelligent Traffic Systems (ITS)*

Intelligent Traffic Systems (ITS) Specialist, at the National Works Agency (NWA), Michael Saunderson, began what became his journey to the NWA, when, upon his graduation from the St Andrew Technical High School, Jamaica, he migrated on an Agricultural Scholarship, to the United States of America, later changing his major to Computer Maintenance.



Michael Saunderson  
Intelligent Transportation Specialist

Michael "Mike" Saunderson, first worked for eight (8) years in Culver City, Los Angeles, California, USA, as a Plant Engineer at MICA Corporation, a manufacturer of printed circuit boards for the aerospace industry. There he had responsibility for instrumentation; developing solid state, prototype circuit boards, using Programmable Logic Controllers (PLC); and the calibration of steam, temperature, hydraulic, air, and flow transducers.

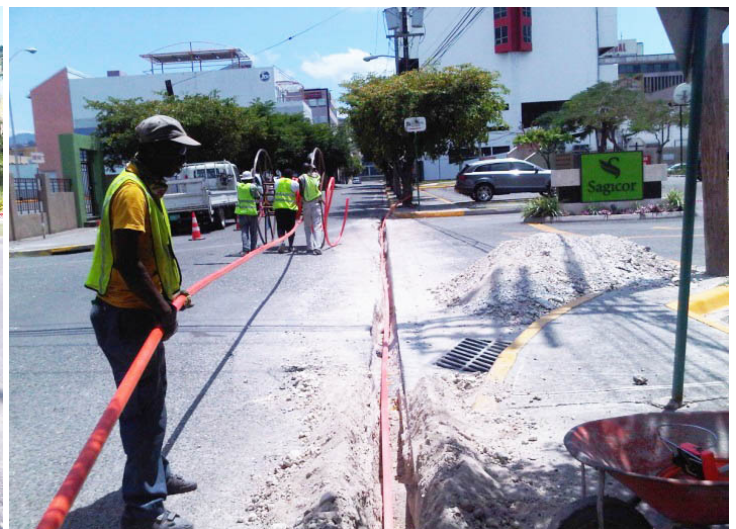
He later worked for two (2) years as an Electronic Switching Technician for Pacific Bell Telephone Company, having responsibility for the routine maintenance of various telecommunication switching and transmission equipment unique to the telephone industry; and then for 12 years for the City of Los Angeles Department of Transportation, various areas of signalization. Here his experience spanned: the construction and installation of new traffic signals as well as rehabilitation of existing traffic signals; heavy duty emergency repairs to traffic signals due to damage resulting from motor vehicle accidents; maintaining signal timing records and ensuring that traffic signal communication systems functioned properly.

Mike Saunderson then moved into private consulting, working, at first, in San Diego, offering consulting services to McCain Traffic Supply, for their ITS network, as well as all their International ITS projects. He worked for a further three (3) years as a Private ITS Consultant, overseeing ITS deployment in China, Brazil, Panama and Jamaica.

In 2004, Mike Saunderson began oversight of the implementation of an ITS project for Kingston, Jamaica, working with the National Works Agency.



Negril, Westmoreland, Jamaica (tourist destination): Trench being cut for the installation of Fibre Optic Cable.



New Kingston, St Andrew, Jamaica: Underground, Fibre Optic Cable ducts being installed.



## VIEWS ON CHALLENGES TO MANAGING TRAFFIC IN JAMAICA

According to the ITS expert the main challenge in Jamaica is the lack of traffic engineering standards and associated performance measures to evaluate the performance of the street network and transportation system. "Here in Jamaica, we use the Manual of Uniformed Traffic Control Devices (MUTCD) and rely somewhat on Transportation Research Board (TRB) for guidance in traffic signal warrants, signage and road design. The lack of adherence to engineering standards and best practices makes the planning, operation and maintenance programme subject to outside interference, which can result in signals being installed that are not warranted and suboptimal operation at some signalized intersections," Saunderson said.

Over the years, the National Works Agency has improved the road infrastructure in tourist resort areas, namely: Ocho Rios in St Ann, Port Antonio, in Portland, Montego Bay in St James and Negril, in Westmoreland, Jamaica. The installation of traffic signals, especially at the entrance of large hotel complexes, was part of the road improvement in these tourist destination areas and benefitted from Saunderson's wealth of experience. These works have improved the safety of motorists and pedestrians, including visitors to the island, who traverse those areas.

## ITS DEPLOYMENTS JAMAICA:

Among the achievements under Saunderson's ITS leadership are:

- i. Dedicated communication system using fibre optic cables and wireless broadband technology. So far, the Agency has installed over 25,000 metres of underground fibre optic cable in Kingston. This project was completed in December 2013.
- ii. An additional 35,000 metres of above ground fibre optic cable were installed in Kingston, since 2009.

Both types of fibre cables form a ring around the capital city of Kingston. The fibre optic cables are used to connect field devices to the Traffic Management Centre (TMC). Some 30 traffic signals and 16 cameras are now linked to the Traffic Management Center (TMC).

Wireless broadband radio links are now being finalised to facilitate communication between the TMC in Kingston and locations in Montego Bay, St James; Ocho Rios, St Ann; and Falmouth, Trelawny. These works should be completed by April 2014.



Wireless Broadband Communication Tower erected the NWA, Head Office, St Andrew.

- iii. Completion of proof of concept works on the deployment of Automatic License Plate Recognition (ANPR) Camera System. The ANPR camera hardware has already been purchased and the accompanying software developed locally.
- iv. Installation of a single Weigh in Motion (WIM) site. This was placed at one end of the approach to one of our major bridges in Kingston and St Andrew: The Dry River (or Hope River) Bridge, Kingston, St Andrew. This weigh station automatically identifies overweight/overladen trucks using the latest technology.

## FUTURE ITS PLANS

- a. Expanding the underground fibre optic cable network outside of Kingston to reach areas such as Portmore, Spanish Town and Old Harbour, in the parish of St Catherine; and May Pen, in Clarendon.
- b. Experimenting with Gigabit Passive Optical Network (GPON) technology for use on end devices and geared at linking traffic signals and cameras to the TMC.

Continues on page 16



## Portland Benefits from Drainage Improvement and Sidewalk Construction

A few years ago, the parish of Portland, in northeastern Jamaica, was characterized as a waterlogged territory with outdated infrastructure and bad roads. This was due mainly to the fact that the area had experienced breaking levels of rainfall each year, coupled with inadequate structural features to mitigate damage from this natural event. Fast forward to present day and Portland is slowly taking its place as a developing locale with boundless potential.

A lot of the changes are due to infrastructural development, such as roads and bridges being constructed, repaired or maintained. In fact, in recent years the parish has seen major infrastructural projects, such as the construction of the Rio Grande and Craigmill Bridges; the renovation of the Fellowship to Berrydale main road; the construction of retaining walls in the Rio Grande and Buff Bay Valleys; interspersed with routine hotmix and spray patching, as well as other forms of maintenance throughout the parish.



Sidewalk construction underway at the St. Margaret's Bay Square in Portland

Even more recently, the parish has benefited tremendously from a Drainage Improvement Programme, which saw the overhaul of drainage structures. A road safety element was also implemented as part of this programme. Under this programme \$2.5 million was allocated to improve drainage structures; replace manhole covers, slabs and gratings; as well as to construct sidewalks.

Areas within the parish that were directly affected by this programme include: Folly to Fair Prospect, Boundbrook to Rio Grande Bridge, Nonsuch to Port Antonio and Breastworks to Windsor. A total of four (4) manhole covers were replaced, while five (5) manhole slabs were constructed. In addition, 8.8 square metres of gratings were replaced and 388.5 square metres of sidewalks constructed. The project was completed in March 2014.



### GRANTS TOWN

Workers constructing a Gabion wall as part of the effort to reconnect the road from Little Bay to Spring Head, St. Mary. The road was severed, in the community of Grants Town, resulting from heavy rains in January. The wall forms part of the approach to rehabilitating the section of road. A box culvert is also to be constructed and the roadway reinstated as part of the overall plan. The corridor is expected to be re-opened by the end of June, 2014.



## *Not so Rocky again in Rocky Point – Road-works completed in a section of the community*

The National Works Agency has completed major rehabilitative works along a one kilometre length of roadway in the popular fishing community of Rocky Point, Clarendon. Rocky Point is home to over 3,000 residents, most of whom rely on fishing for their livelihood. The poor road condition in the community has been in focus, owing to the large numbers of people who venture into and out of the area on a daily basis.

The NWA, with the support of the Member of Parliament, Rudyard Spencer, and the Road Maintenance Fund (RMF), sought to reduce the impact of the bad road condition on the residents and formulated a plan of action.

With the support of State Minister for Works, Richard Azan, an allocation of seven million dollars was made for works to be undertaken. The works undertaken and completed included the removal of the badly rutted sections of the road, rebuilding of the road base, and drainage improvement. The road was completed using Double Surface Dressing (DSD).

Minister Azan, who toured the project before its completion, expressed his pleasure at the quality of work that was being done. He said that while the budget was not big, the team was able to cover the one kilometre stretch without sacrificing quality.

For his part, MP, Rudyard Spencer said that the works signal the start of larger plan that is in motion for the community. He said that the works were welcomed by the community and that his intention was to complete works on all the roads in the community. An estimated \$80 million is needed to carry-out the repairs. Mr. Spencer said that he intended to have the works done in increments, ultimately having it completed to complement the opening of the Hugh Shearer Centre in the community.

Mayor of May Pen, Sean Barnswell, who also toured the project remarked that the works were a welcomed change for the community of Rocky Point.



Road being sanded after oiling as part of the construction process.



Minister Azan and MP for South East Clarendon, Rudyard Spencer discussing the development of the road works



# **BIG UP TEAM NWA!!**

Dear Mr. Nelson,

On behalf of the citizens and all stakeholders of Wireless Station Road and its environs, please accept our heartiest congratulations on the excellent rehabilitative work executed on Phase One of Wireless Station Road over the past weeks. This body of work performed by the Contractor, Mr. Vincent Collins is a prime example of professionalism, attention to detail and timeliness.

Please convey our grateful thanks to your team member Mr. Everton Edwards, who ensured through his oversight that the NWA's expenditure produced the desired results. Messrs. Vincent and Gilroy Riley who led their work team must also be commended.

It is hoped that the rehabilitation of Phase Two of Wireless Station Road and Diamond Road will commence and be completed in a similar manner. We also look forward to the visit of the "Drain Cleaner" machine to unclog the drain that you are aware of.

Again, many thanks for your continued good works and look forward to your early return.

Yours truly,  
Effiom Whyte

## **ITS ... continued from page 11**

- c. Upgrading the TMC network equipment to include Cisco Metro-Ethernet Switches (MPLS), new workstation and video wall.
- d. Developing mobile application to monitor street cuts by utility companies.
- e. Developing mobile application for streaming traffic-related videos over mobile phones – we have successfully tested with Blackberry.
- f. Developing a framework for Next Generation Public Safety Network using 4G Long Term Evolution (LTE) Technology. The ITS fibre network would support the deployment of 4G LTE technology where feasible.
- g. Developing plans to deploy a public Wi-Fi network at traffic signals. Each traffic signal controller has been upgraded to communicate via IP and so it will be easy to add IP based devices, such as Wi-Fi, at the signals.

The Advantage of working in Jamaica...says Mike Saunderson

"The advantage of working in Jamaica is that there are so many transportation problems to solve and I like solving problems so I am never without a problem to work on. The challenge for ITS managers on islands such as Jamaica is to recognise early that many of the problems have more to do with institutional weakness rather than the lack of technology. We could deploy the most advanced transportation technology and it will fail to produce the desired outcomes, due to a poor enforcement environment. The ITS manager who recognises and identifies the links between institutional weakness and ineffective results, and then develops a solution within the ITS, will stand a better chance of succeeding," Saunderson said.

"A case in point, I recognised early that traffic enforcement was very poor and so motorists accumulated many traffic tickets and warrants without fear of prosecution by the Police. We consulted with the police and found what their weaknesses were and we developed a solution around the use of ANPR cameras to automatically capture the plates of motorists with outstanding tickets. The pilot was a success! Now the plan in consultation with the Police is to place ANPR cameras at each entry and exit point into Kingston. At the same time, I am ensuring that the underground fibre network will be available at each of these ANPR sites by April 2014. The idea is, if we can first effect change in the enforcement environment, the ITS project will yield greater benefits," he added.



## "DOING ROAD" -

*Sights,  
Scenes and  
Community  
Relations*



Timothy DePass, Assistant Land Surveyor at the NWA, explains to students how to use a Level to measure the difference in elevation of land. The event was the Mathematics Exposition, held at the University of the West Indies - Mona campus. The Expo was an initiative of the Ministry of Education and aimed at showing students the practical application of Mathematics in a wide range of careers.



Seriously! The Conductor of this bus, gave up his 'space' on this bus to accommodate more passengers. But guess where he had to ride?



Glendon Brown, NWA's Senior Lab Technician, along with Erroll Miller, Lab Technician, demonstrate to this group of students and their teacher how the density of compacted asphalt samples is calculated using the Specific Gravity Apparatus. The occasion was the recently held Forum on Education at the University of the West Indies, Western Campus, in Montego Bay, St. James.



## Relief on the way for many...

### Over 200 road sections to be addressed under JEEP

Many residents, motorists and pedestrians alike, are expected to breathe a sigh of relief in short order. This, as the NWA, through the Third Phase of JEEP, under the Major Development Infrastructure Programme (MIDP), has targeted a total of two hundred and twelve (212) road sections

for repairs, over the next three (3) months. The scope of works under this project, includes road rehabilitation as well as routine maintenance of roads and sidewalks. The project is expected to cost a total of \$630-million, and includes the roads listed below..

- |  |  |   |  |
|--|--|---|--|
| <ul style="list-style-type: none"> <li>• <b>ST. ANDREW</b></li> <li>• Morgan Lane</li> <li>• Harryban Lane</li> <li>• Lloyds Close</li> <li>• Key Drive</li> <li>• Richings Avenue</li> <li>• Saunders Avenue</li> <li>• Cherry View</li> <li>• Cookham Dean Avenue</li> <li>• Halls Crescent</li> <li>• Boobie Drive</li> <li>• Simon Park Road</li> <li>• Ashbury Avenue</li> <li>• Price Lane</li> <li>• Rochdale Avenue</li> <li>• Fontenoy Avenue</li> <li>• Kebble Crescent</li> <li>• Blue Castle Drive</li> <li>• Roselle Avenue</li> <li>• Grants Crescent</li> <li>• Kew Road</li> <li>• Albion Avenue</li> <li>• Frank Spaulding Park</li> <li>• Zimbadwee</li> <li>• Greenwich Park Road</li> <li>• Rousseau Road</li> <li>• Mount Airy Square - Mount Prospect</li> <li>• King Weston Road</li> <li>• Arthur Leon Drive</li> <li>• Cyprus Hall - Belvedere</li> <li>• Hampton Crescent</li> <li>• Norbrook Way</li> <li>• Sullivan Avenue</li> <li>• Savoy Terrace</li> <li>• Mount Charles</li> <li>• Guava Ridge - Mahogany Vale</li> <li>• Bell Road</li> <li>• Ninth Street</li> <li>• Third Avenue</li> <li>• Zenith Avenue</li> <li>• Lasquinat Avenue</li> <li>• Church Lane</li> <li>• Leas Flat Road</li> <li>• <b>KINGSTON</b></li> <li>• Love Lane</li> <li>• Seaga Boulevard</li> <li>• Solidarity Road</li> <li>• Maiden Lane (Off Harbour Street)</li> <li>• Water Street (Off Windward Road)</li> <li>• Stanton Street</li> <li>• Wellington Street</li> <li>• Mapletaff Avenue</li> <li>• Burger Avenue</li> <li>• Eastburn Avenue</li> <li>• <b>ST. THOMAS</b></li> <li>• Cedar Valley Junior High School</li> <li>• Yard and Main Road</li> <li>• White Horses Primary School</li> <li>• Yard and Main</li> </ul> | <ul style="list-style-type: none"> <li>• Cambridge Hill Road 11 -Miles</li> <li>• Fishbowl Lane - Yallahs</li> <li>• Hordley-Haining</li> <li>• Potosi-Morant River Bridge</li> <li>• Hospital Drain</li> <li>• Campbell Lane</li> <li>• Morant Bay Township</li> <li>• <b>ST. JAMES</b></li> <li>• Felicity Road</li> <li>• Construction Of Football Field</li> <li>• Bouge Basic School Renovation</li> <li>• Point to Fairfield (Kensington)</li> <li>• Cambridge - Retrieve (Cambridge Square)</li> <li>• Point - Flagstaff</li> <li>• Reading - Anchovy (Nigger Ground)</li> <li>• Barrett Town</li> <li>• Camrose</li> <li>• Hopeton</li> <li>• Virgin Valley</li> <li>• Adelphi - Irwin Dale</li> <li>• Adelphi-Hampden</li> <li>• Springmount</li> <li>• Hampton</li> <li>• Kempshot</li> <li>• Paisley</li> <li>• Somerton</li> <li>• Fording - Adelphi</li> <li>• Williamsfield</li> <li>• Vernons Drive</li> <li>• <b>ST. CATHERINE</b></li> <li>• Reid's Pen Breaton</li> <li>• Clifton Road</li> <li>• 8 WEST Greater Portmore</li> <li>• Swallow Way (Hellshire)</li> <li>• Banburry to Victoria</li> <li>• Recreation Drive</li> <li>• Bowers Drive</li> <li>• Gillette Street</li> <li>• Rhodney Hall Road</li> <li>• Charlemont Housing Scheme</li> <li>• Vanity Fair Bridge</li> <li>• Jericho Road</li> <li>• Long Grass Road</li> <li>• Brivate Road</li> <li>• Lakesmore Roads</li> <li>• Angels Drive</li> <li>• Cannal Crescent</li> <li>• St Jago Drive</li> <li>• Spanish Town Bypass - Hill Run (Town Gully)</li> <li>• Duhaney Drive (P.C Road)</li> <li>• Garveymead Block 1A</li> <li>• Retrofit Metal Container - Waterford Infant School</li> <li>• Armarda Courts</li> <li>• Marlie Acres</li> <li>• Hanson Avenue</li> <li>• Barness Drive &amp; Barness Ave (Ensone)</li> <li>• Lauriston Roads</li> </ul> | <ul style="list-style-type: none"> <li>• Green Dale Roads</li> <li>• Burke Road</li> <li>• Garvey Way</li> <li>• Cedar Grove High School</li> <li>• Hamilton Gardens</li> <li>• <b>CLARENDON</b></li> <li>• Belle Plain Rehabilitation</li> <li>• Evans Street (Denbigh)</li> <li>• Farm (May Pen East)</li> <li>• Chatteau (May Pen East)</li> <li>• Bushy Park (May Pen North)</li> <li>• Plaza Drive (May Pen West)</li> <li>• Evans Street (Denbigh)</li> <li>• Farm (May Pen East)</li> <li>• Chatteau (May Pen East)</li> <li>• Bushy Park (May Pen North)</li> <li>• Plaza Drive (May Pen West)</li> <li>• Chesterfield - Rocky Point</li> <li>• Summerfield - Blackwood</li> <li>• Sweeney Top Road</li> <li>• Mt. Providence - Cross Path</li> <li>• Carty Hill - Desire Road</li> <li>• Crooked River Cemetery</li> <li>• Manhole Hill</li> <li>• Kellits - Brandon Hill</li> <li>• Cove Road (Rehab)</li> <li>• Cove Road (Con'td Rehab)</li> <li>• Lodge Road (Rehab)</li> <li>• Windsor Road - Chocolate Market (Rehab)</li> <li>• <b>MANCHESTER</b></li> <li>• Far Enough</li> <li>• Meadsfield - Berry Hill</li> <li>• Trinity Road</li> <li>• Meadsfield - Berry Hill</li> <li>• New Green Basic School</li> <li>• Hibernia Log Road</li> <li>• Silver Grove - Amby</li> <li>• Bashie Road</li> <li>• Edward Road</li> <li>• Green Street</li> <li>• Woodlawn Road</li> <li>• <b>HANOVER</b></li> <li>• PJ Hill</li> <li>• Dry Hill Road</li> <li>• Camel Hill Road</li> <li>• Ginger Hill Road</li> <li>• Mount Peto PC Road</li> <li>• Camp Road</li> <li>• Maryland</li> <li>• <b>ST. ELIZABETH</b></li> <li>• Ballards Valley P.C Road</li> <li>• Plummer Town Road</li> <li>• Elgin P.C Road</li> <li>• Brinkley - Fairfield</li> <li>• New Building P.C.Road</li> <li>• Junction - Todd Town P.C Road</li> <li>• Back Street P.C. Road</li> <li>• Magotty Pass P.C. Road</li> <li>• Coker P.C. Roads</li> </ul> | <ul style="list-style-type: none"> <li>• Short Hill (P.C. Road)</li> <li>• Pedro Cross - Great Bay Entrance</li> <li>• Watchwell - Newcombe Valley (P.C. Road)</li> <li>• Spring - Pang Town</li> <li>• Aberdeen - Quick Step</li> <li>• <b>ST. ANN</b></li> <li>• Borobridge - Cave Valley</li> <li>• Alexandria - St. D'Acre</li> <li>• Yelland - Madras</li> <li>• Aboukir - McKenzie</li> <li>• Grants Mountain</li> <li>• Gibraltar -Linton Park</li> <li>• Cascade -Borobridge</li> <li>• Goshen</li> <li>• Benin</li> <li>• Stanfast Road</li> <li>• St. Hilda - York Castle</li> <li>• Shelly Road</li> <li>• Muirhouse</li> <li>• Hamstead</li> <li>• Claremont - Carlton Mountain</li> <li>• Bonneville - Ballintoy</li> <li>• Dunsville Road</li> <li>• Negro River Basin</li> <li>• New Ground, Lime Hall</li> <li>• Stormont Road - Marcus Garvey High</li> <li>• Seville Heights Road</li> <li>• <b>PORTLAND</b></li> <li>• Wakefield - Hardwar Gap</li> <li>• Buff Bay - Whitehall</li> <li>• St. Margarets Bay - Rock Hall</li> <li>• Landsettlement Road</li> <li>• <b>ST. MARY</b></li> <li>• Highgate All Age &amp; Junior High School</li> <li>• Palmetto Grove</li> <li>• Golden Grove - Epsom Road</li> <li>• Seaton Road</li> <li>• Claremont - Orange Hill</li> <li>• Gibbs Hill</li> <li>• Richmond - Kendal</li> <li>• Gayle - Guys Hill (Arcadia)</li> <li>• Prospect - Content</li> <li>• <b>WESTMORELAND</b></li> <li>• Fullersfield Road</li> <li>• Broughton Pc Road</li> <li>• Bethel Town - Lambs River</li> <li>• Wharf Road)</li> <li>• Kingswood Road</li> <li>• Torrington - Pennycooke</li> <li>• Grange - Friendship</li> <li>• Seaton Crescent &amp; Rose Street</li> <li>• <b>TRELAWNY</b></li> <li>• Freeman Hall - Litchfield</li> <li>• Martha Brae - Kinloss</li> </ul> |
|--|--|---|--|



# On the roads with Minister Richard Azan



Minister Azan cutting the ribbon to officially declare the NWA's Hanover Parish Office open. Sharing the moment were Project Manager, Moira Williamson; CEO, E.G. Hunter; Director of Human Resources Management and Administration Dr. Jennifer Henry and Member of Parliament, Western Hanover, Ian Hayles.



Minister Azan looking at works underway within the channel of the Blue Diamond Gully, St. James. Sharing the discussion are Regional Manager, Western Damion Townsend (1st left) and Director of Planning & Research, Patrick Rose.



Minister Azan on tour with Member of Parliament, West Central St. James Sharon Fflokcs Abrahams (left). At right are Deputy Mayor of Montego Bay Councillor Michael Troupe and Councillor, Spring Mount Division, Martin Kellier (right).



Minister Azan in discussion about roads in sections of St. Ann. Sharing the moment are: (from left) Councillor Ian Bell, State Minister for Local Government Colin Fagan, Mayor St. Ann's Bay, Desmond Gilmore, Councillor Delroy Redway and Member of Parliament for North West St. Ann, Dr. Dayton Campbell.



**Rocky Point main road under construction.** Minister Azan looks at the progress of works along the Rocky Point main road, Clarendon. Rudyard Spencer, MP, South-East, Clarendon (2nd left) looks, as does Managing Director of the RMF, Clement Watson (1st left) and NWA's Regional manager South, Sadiq Mahabeer (1st right).



**Bog Walk to Sligoville main road under construction.** Minister Azan getting a firsthand look at the works along the Bog Walk to Sligoville road, St. Catherine. Also in the picture (from right) are Deputy CEO, NWA, Earl Patterson, Major Projects Manager, NWA, Desrick Litchmore and Member of Parliament, East Central, St. Catherine, Hon. Natalie Neita-Headley.



# Live Love Laugh



"He's not in there! Oh, wait - he's changed his status to 'risen' "



"Happy Easter! And don't forget to 'like' me on facebook!"



"Ten bucks and I'll tell you where all of them are."

## How to Decorate Easter Eggs

Decorating Easter eggs is a fun activity that you can do with your kids. There are numerous ways to make the eggs colorful without sticking to a traditional kit. When working with art supplies, always work with hard boiled eggs. After ten minutes on the stove and some cooling down time, you're ready! Assemble your materials and let's get started.



**WITH CRAYONS:** Hard boil egg then let cool until you can hold them in your hand, but still feel some warmth. In general, give the eggs about 10 to 15 minutes.

Use crayons to draw and color on the eggs. The heat from the eggs will melt the wax so you don't have to press too hard, which could crack your eggs. •If you have small children, guide them along their first egg. They may need to be shown how much pressure is appropriate or how to draw along a curve.



### WITH STICKERS AND MARKERS

Put stickers on the eggs to decorate them. To ensure that the stickers stick, make sure that you dry the outside of the eggs completely and let them cool to room temperature first.



Use markers to draw pictures or fun designs on your eggs. You may need to go over each design more than once to get a vivid picture. Experiment with different marker tips by using a range of thinner and thicker markers to vary your designs.



### WITH PAINT

Allow the eggs to cool completely. Set them in the fridge if you'd like to speed up the process. Use acrylic paint with a brush to create fun designs. Since eggs are pretty small, get some fine-pointed paint brushes. If you're working with children, show them how to hold the egg so as not to get paint all over their hands or smudge the egg. •Paint one half at a time and let it dry before painting the other half to avoid smearing the paint. It'll be easiest to stick to geometrical patterns and shapes.